

1 — 2  
THROUGH  
44

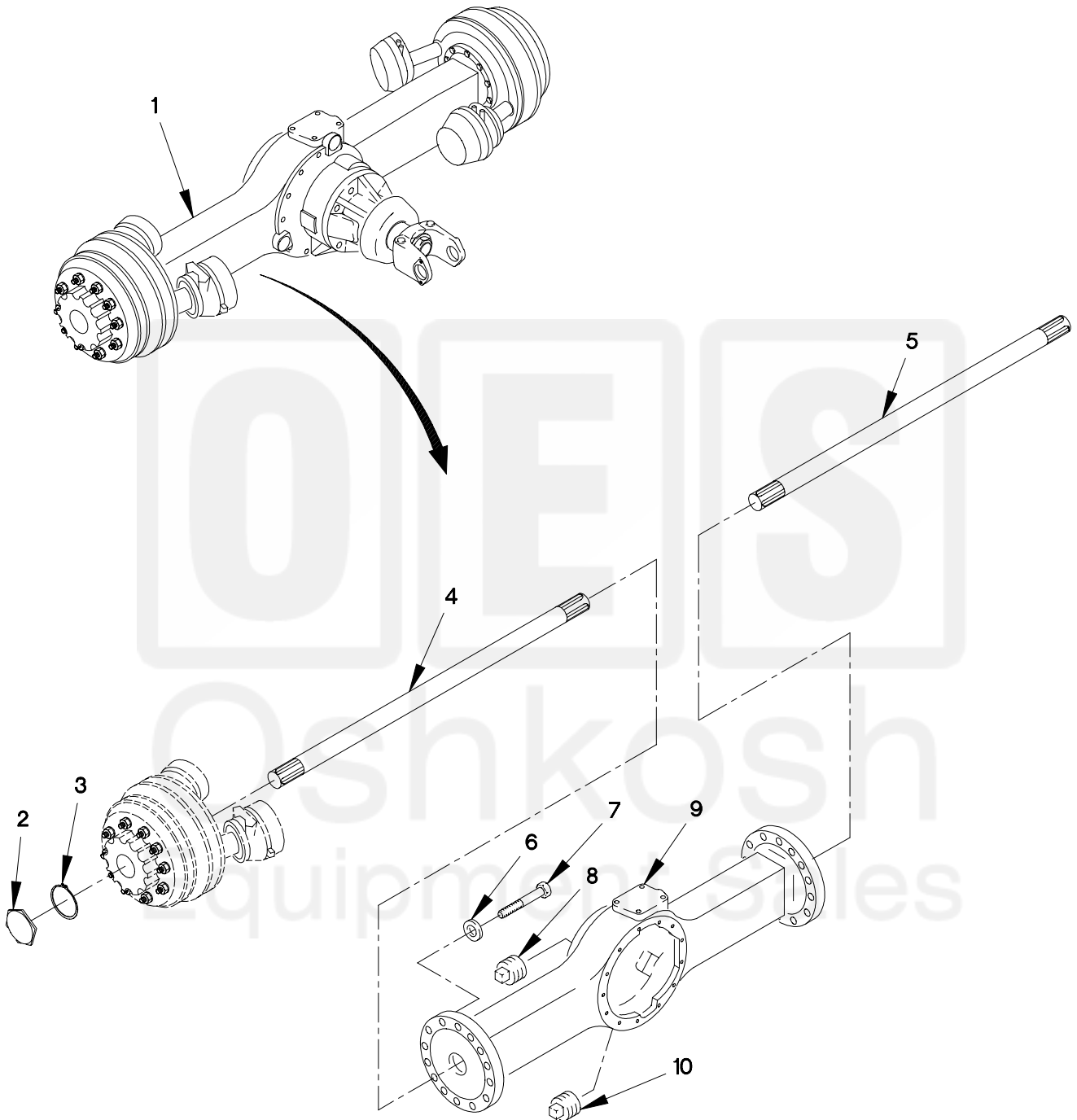
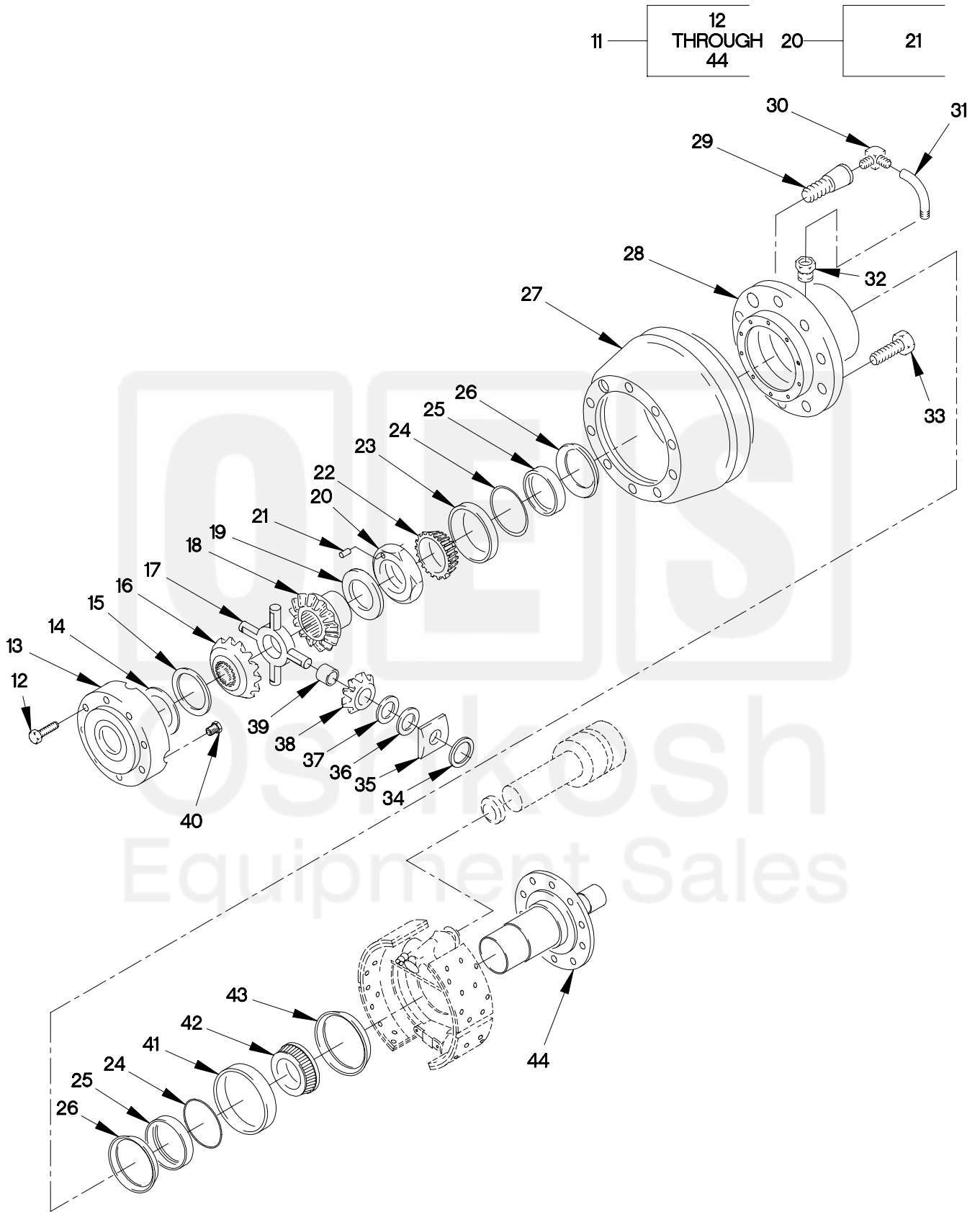


FIGURE 134. REAR AXLE AND WHEEL END ASSEMBLY (SHEET 1 OF 2)

1100B-1C



1100A-2C

FIGURE 134. REAR AXLE AND WHEEL END ASSEMBLY (SHEET 2 OF 2)

SECTION II

TM 9-2320-365-24P

(1) ITEM NO	(2) SMR CODE	(3) CAGEC	(4) PART NUMBER	(5) DESCRIPTION AND USABLE ON CODE (UOC)	(6) QTY
GROUP 1100: REAR AXLE ASSEMBLY FIG.134 REAR AXLE AND WHEEL END ASSEMBLY					
1	PRFHH	19207	12421817	AXLE ASSEMBLY,AUTOM.....	1
2	PAOZZ	78500	1250T1086	.CAP,GREASE.....	2
3	PAOZZ	78500	1229C1121	.RING,RETAINING.....	2
4	PAOZZ	78500	3202B9830R	.SHAFT,AXLE,AUTOMOTI.....	1
5	PAOZZ	78500	3202A9829L	.SHAFT,AXLE,AUTOMOTI.....	1
6	PAFZZ	78500	1229-Y-1507	.WASHER,FLAT.....	20
7	PAFZZ	78500	S-2924-2-A	.SCREW,CAP,HEXAGON H.....	20
8	PAOZZ	81348	WW-P-471ACBBUE	.PLUG,PIPE.....	1
9	XAHZZ	78500	C73201Z7800	.HOUSING ASSY,REAR 6X6.....	1
10	PAOZZ	78500	1250-E-473	.PLUG,MACHINE THREAD.....	1
11	AFFFF	78500	A5333A4317	.WHEEL END ASSY LEFT HAND SIDE.....	1
11	AFFFF	78500	A6333A4317	.WHEEL END ASSY RIGHT HAND SIDE.....	1
12	PAOZZ	78500	10X1563	..SCREW,CAP,HEXAGON H.....	12
13	PAOZZ	78500	3266-A-1275	..COVER,ACCESS.....	1
14	PAOZZ	78500	1229A4161	..BEARING,WASHER,THRU.....	1
15	PAOZZ	78500	1228J1154	..BEARING,WASHER,THRU.....	1
16	PAOZZ	78500	2234F1202	..GEAR,BEVEL.....	1
17	KFOZZ	78500	3278Z1118	..SPIDER,DIFFERENTIAL.....	1
18	PAOZZ	78500	2234E1201	..GEAR,BEVEL.....	1
19	KFOZZ	78500	2203J9500	..SHIM .012IN (.30MM).....	V
19	KFOZZ	78500	2203K9501	..SHIM .015IN (.38MM).....	V
19	KFOZZ	78500	2203N9504	..SHIM .031IN (.79MM).....	V
19	KFOZZ	78500	2203L9502	..SHIM .020IN (.51MM).....	V
19	KFOZZ	78500	2203M9503	..SHIM .025IN (.64MM).....	V
20	PAOZZ	78500	A1227X1480	..RETAINER,PACKING (WHEEL BEARING NUT) PIN (19X1067) INCLUDED IN THIS ASSEMBLY.....	1
21	XA	78500	19X1067	..PIN,STRAIGHT,HEADLE SOLD AS PART OF A1227X1480 ONLY.....	2
22	PAOZZ	60038	47686	..CONE AND ROLLERS,TA.....	1
23	PAOZZ	61220	47620	..CUP,TAPERED ROLLER.....	1
24	PAOZZ	78500	1229K3131	..RING,RETAINING.....	2
25	PAOZZ	78500	2297R6648	..SEAL,PLAIN.....	2
26	PAOZZ	78500	A-1205-Q-2435	..SEAL ASSY,CTIS.....	1
UOC:LAA,LAB,LAC,LAD,LWB,					
27	PAOZZ	78500	3219-W-4833	..BRAKE DRUM.....	1
28	KFOZZ	78500	A-333-A-4317	..HUB,WHEEL END ASSY.....	1
29	PAOZZ	78500	20X2123	..SCREW,MACHINE LEFT HAND.....	1
29	PAOZZ	78500	20X2122	..SCREW,MACHINE RIGHT HAND.....	1
30	PAOZZ	78500	2206D1018	..ELBOW,BOSS.....	1

SECTION II

TM 9-2320-365-24P

(1) ITEM NO	(2) SMR CODE	(3) CAGEC	(4) PART NUMBER	(5) DESCRIPTION AND USABLE ON CODE (UOC)	(6) QTY
31	PAOZZ	78500	A-3196-X-1194	..TUBE ASSEMBLY,METAL.....	1
32	PAOZZ	78500	2297P3838	..SEAT,TUBE.....	1
33	PAOZZ	78500	20X1577	..BOLT,FIREBRICK ANCH LEFT SIDE....	9
33	PAOZZ	78500	20X1578	..BOLT,FINNED NECK RIGHT SIDE.....	9
34	PAOZZ	78500	5-X-1155	..O-RING.....	4
35	PAOZZ	78500	1229W4157	..BEARING,WASHER,THRU.....	4
36	PAOZZ	78500	1228K1155	..BEARING,WASHER,THRU.....	4
37	PAOZZ	78500	1229Z4160	..BEARING,WASHER,THRU.....	4
38	PAOZZ	78500	2233J1102	..GEAR,BEVEL.....	4
39	PAOZZ	78500	1228H1152	..BEARING,WASHER,THRU.....	4
40	PAOZZ	78500	1850T 124	..PLUG,PIPE,MAGNETIC.....	1
41	PAOZZ	60038	JM716610	..CUP,TAPERED ROLLER.....	1
42	PAOZZ	60038	JM716649	..CONE AND ROLLERS,TA.....	1
43	PAOZZ	78500	A-1205-R-2254	..SEAL,PLAIN ENCASED.....	1
44	PAOOO	78500	A3213-Q-1759	..SPINDLE,WHEEL,DRIVI.....	1

END OF FIGURE

